



**THE
IMAGING**
SOLUTIONS COMPANY®

2026 ULTRASOUND TRAINING CALENDAR



Facility Training Location
9892 East 121st Street
Fishers, IN 46037

Tuition: \$5850

Register:

866.900.9404

ultrasoundtraining@mxrimaging.com



For decades, HTM professionals from all over the world have attended our Ultrasound BOOT CAMPS as a way to add ultrasound into their portfolio of technologies.

For 2026 we are offering featured boot camps where you can choose the boot camp that features the ultrasound system(s) you need.

2026 ULTRASOUND BOOT CAMP CALENDAR

All Boot Camps include:

Ultrasound Basics & Preventative Maintenance + DICOM/Networking + Applications Instruction + Featured Course

April	6-10	Ultrasound Basics with PM/DICOM	GE	Logiq E9/Logiq E10
May	4-8	Ultrasound Basics with PM/DICOM	GE	Vivid E95/E90
June	15-19	Ultrasound Basics with PM/DICOM	GE	Voluson E8/Voluson E10
August	17-21	Ultrasound Basics with PM/DICOM	Philips	Epiq 5/7 & Affiniti Series NEW COURSE
September	14-18	Ultrasound Basics with PM/DICOM	Canon	iSeries (i700/i800/i900)
October	19-23	Ultrasound Basics with PM/DICOM	Philips	Epiq Elite & Affiniti Series NEW COURSE

MXR Imaging reserves the right to reschedule or cancel a training course should the class not meet minimum enrollment at registration deadline. All courses and dates are subject to change without notice. Please call for most current information.

On The Spot Training Class

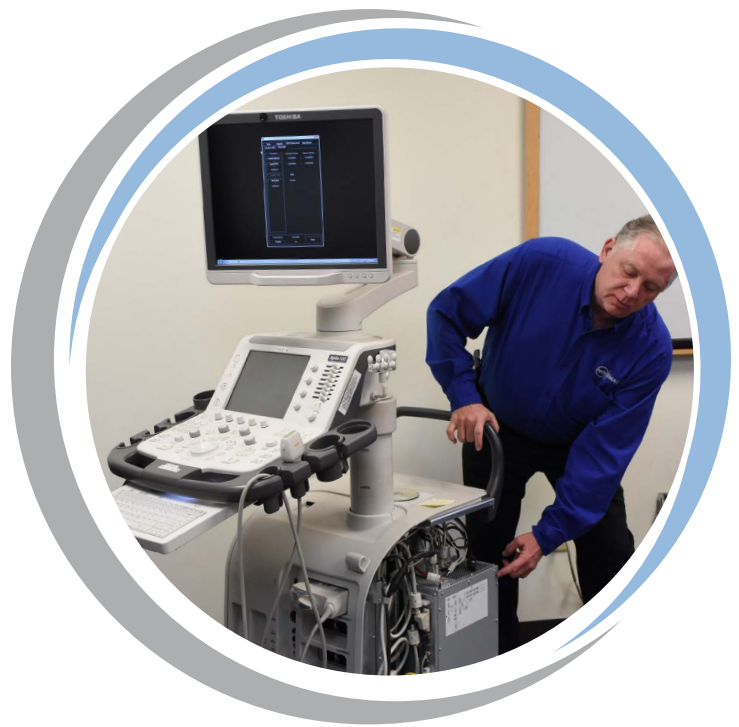
We deliver on-site training at your facility

On-the-Spot Tuition: The base price of an on-the-spot class is \$5350 for a class lasting up to two days. Each additional classroom day will add \$1000 to the base tuition price of the class. Full payment must be received 30 days prior to the start date of the class.

Instructor Per-Diem: This covers the instructor's Air, Hotel and Car Rental. To keep your costs low, MXR schedules instructor's travel as far in advance as possible. Full payment must be received 30 days prior to the start date of an on-the-spot class, or additional travel fees may be incurred.

System Rental: If the customer requires it, MXR will ship complete, fully functioning Ultrasound systems to be used during the hands-on portions of the class. Rental costs do not include shipping.

System Shipping: Actual freight cost of sending a system to your facility for use during training and returning it to MXR's facility. We will crate and package all equipment at our cost. In some cases, the customer may choose the carrier, and bill to their own shipping account.



Customizable Courses Available

Don't see what you need?

Ask us, we can customize a class that is tailored to your needs.

Special Discounts Available

Contact us to find out if you qualify for any of our special discount categories.

AAMI CEUs

Our classes are Pre-Approved for AAMI Continuing Education Units, at a rate of one unit per hour of classroom time attended. These credits are available for classes taken at our facility or yours.

BOOT CAMP COURSES

Multi-Vendor PM/DICOM:

Networking Basics
The OSI Model
DICOM
DICOM Tools
Trouble Shooting
Inspections
PM: Develop the Process
Check System Operation
Capture Pertinent Data
System Back-Ups
Inspecting Transducers
Electrical Safety
Preventative Maintenance

GE Logiq E9/E10/Vivid E95/Voluson E8/E10::

System
AC Power Distribution
Diagnostics & Troubleshooting
Networking
System Backups
Software
Parts Replacement Procedures
System Adjustments
Preventative Maintenance
Hand-On Instruction

Philips Affiniti Series:

Overview
Operational Testing
Hardware Access
Adjustments
Preventative Maintenance
Troubleshooting
Hands-On Instruction

Philips Epiq:

Overview
Operational Testing
Hardware Access
Adjustments
Preventative Maintenance
Troubleshooting

Ultrasound Basics:

Diagnostic Ultrasound
Doppler
Enhanced Imaging Modes
Block Diagrams

Canon iSeries:

Overview
Operational Testing
Hardware Access
Adjustments
Preventative Maintenance
Troubleshooting
Hands-On Instruction

Ultrasound Applications with Training Courses

Registered customers will have the opportunity to work directly with a trained Sonographer during the training week. The applications specialist will go over the ultrasound system material with the students.

After ultrasound theory there will be a lab in which each student will get a chance to learn how to scan their thyroid and carotid arteries to visually see how the ultrasound system interacts with the different tissue types in the neck. This will put into perspective the theory of how the ultrasound pulse interacts with different tissue types throughout the body. Next the students will see how a Sonographer uses the anatomy as markers to find different structures in the neck. The exercise will provide the students an understanding of how the ultrasound pulse interacts through the body to visualize the anatomy like the kidneys, gallbladder, and other structures within the body. Students will learn the technique of how to scan using the B-Mode to locate the artery and thyroid.

Students will also review the setup of various doppler modes to see the correlation between the doppler modes and how the blood flows in the veins and arteries. This hands-on experience will reinforce the doppler theory. The students will interact with a Sonographer allowing them exposure to real life scenarios.

Applications not included with On-the-Spot training can be quoted separately



About MXR Imaging

MXR Imaging, Inc. is the largest independent distributor of imaging sales and service in the U.S. As an industry leader, we provide a wide variety of New and Platinum Certified Pre-Owned imaging equipment. Additionally, we offer service support, legacy equipment assistance, equipment relocation, mobile rentals, parts, radiation protection and RF shielding, training, and medical supplies to the healthcare market. MXR possesses an extensive imaging equipment portfolio which includes: CT, PET/CT, MRI, General Radiology, Ultrasound, and PACS.